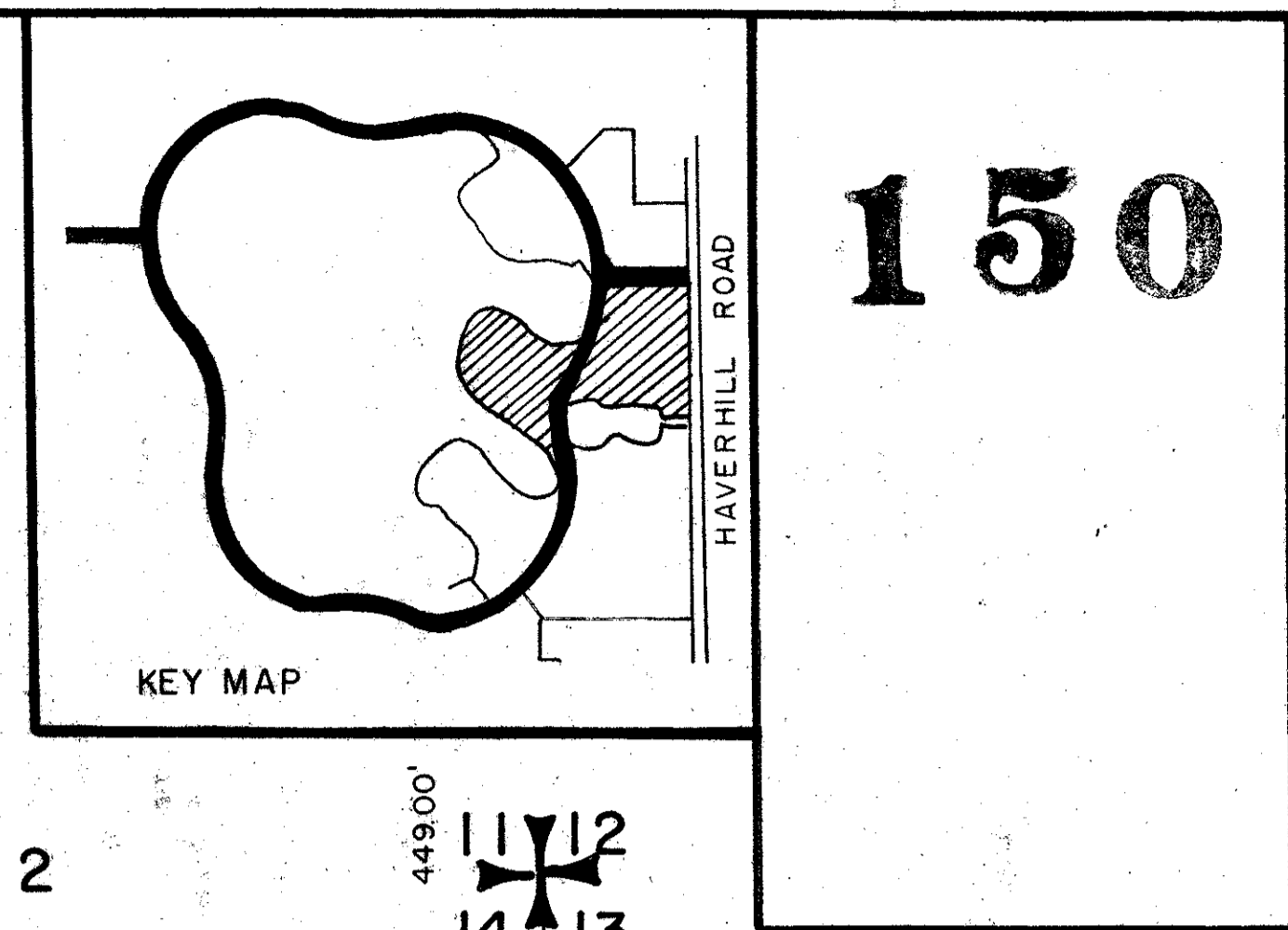


**A PLANNED UNIT DEVELOPMENT IN CYPRESS LAKES
CYPRESS LAKES PLAT NO. 2
IN FOUR SHEETS, SHEET NO. 3**

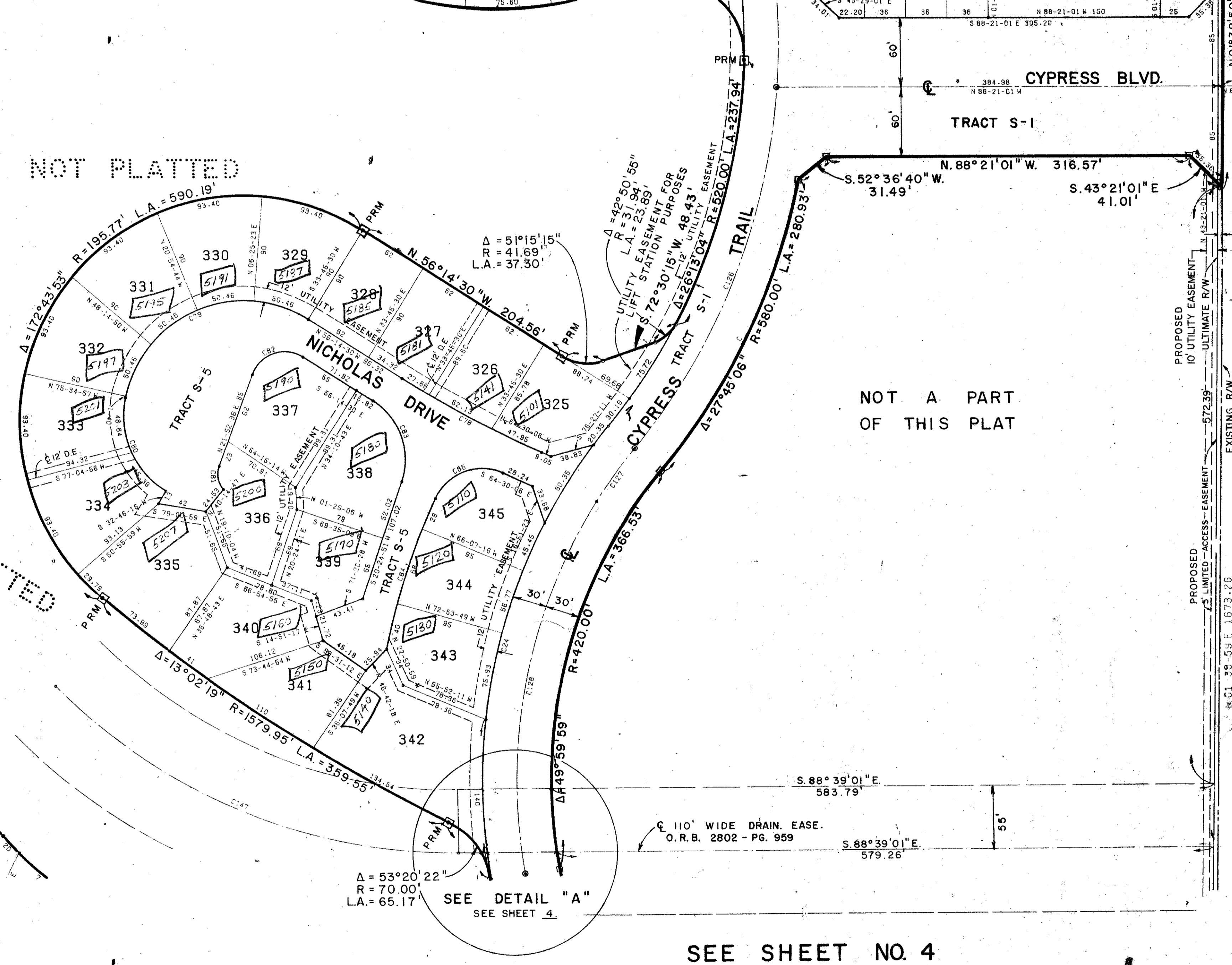


150

STATION	CHORD	ARC	DELTA	CH BRC
1	53.00	56.53	86.58	104.68
2	123.63	55.62	105.93	109.48
3	340.77	431.27	324.76	814.81
4	70.00	104.85	116.44	137.80
5	520.00	121.00	235.57	237.94
6	31.94	12.53	23.33	23.88
7	41.65	20.00	36.77	37.33
8	35.77	30.22	39.75	39.99
9	179.95	160.55	338.17	359.55
10	70.00	30.76	62.84	65.17
11	87.00	34.15	68.81	70.71
12	163.95	85.44	135.74	139.42
13	163.60	95.68	147.43	148.73
14	88.07	112.80	116.36	139.93
15	59.37	103.28	91.01	99.25
16	173.16	32.25	64.19	63.08
17	44.57	45.78	64.15	71.44
18	420.75	88.99	173.00	174.25
19	432.00	156.14	230.02	300.38
20	380.20	143.28	216.19	280.93
21	420.00	195.96	355.00	386.50
22	495.00	329.36	511.67	539.44
23	420.00	264.57	441.31	472.10
24	489.00	233.81	405.58	416.85
25	520.00	368.65	588.24	625.24
26	490.00	35.91	71.60	1.58
27	510.00	40.70	81.15	81.23
28	480.00	278.33	250.97	257.56
29	19.00	13.45	26.83	25.83
30	10.00	37.23	54.38	54.40
31	75.00	14.60	29.30	28.51
32	23.00	25.00	31.82	31.82
33	80.00	15.18	30.37	30.37
34	200.00	19.19	38.57	38.57
35	205.06	30.81	39.51	39.51
36	25.00	25.00	31.82	31.82
37	25.00	25.00	31.82	31.82
38	25.00	25.00	31.82	31.82
39	420.00	21.37	42.59	42.60
40	420.00	21.37	42.59	42.60
41	28.00	44.79	54.63	54.63
42	1477.28	19.10	38.21	38.21
43	25.00	23.19	35.98	37.35
44	75.00	27.12	41.83	41.83
45	25.00	25.00	31.82	31.82
46	1477.28	17.21	34.42	34.42
47	1477.28	17.21	34.42	34.42
48	158.00	35.21	134.31	106.97
49	480.00	25.22	52.36	52.38
50	480.00	25.22	52.36	52.38
51	480.00	25.22	52.36	52.38
52	480.00	25.22	52.36	52.38
53	480.00	25.22	52.36	52.38
54	480.00	25.22	52.36	52.38
55	500.00	35.18	60.38	60.30
56	25.00	25.11	31.78	31.78
57	25.00	24.00	30.42	30.42
58	530.00	37.07	74.01	74.05
59	420.00	82.41	156.07	159.89
60	70.00	66.14	86.11	86.11
61	230.00	28.53	59.06	59.06
62	355.00	19.84	39.81	39.83
63	70.00	66.14	86.11	86.11
64	1300.00	28.53	59.06	59.06
65	50.00	52.39	67.94	67.94
66	220.00	35.46	70.07	70.07
67	477.77	29.75	59.75	59.75
68	25.00	23.97	34.43	36.21
69	40.00	34.68	42.41	42.41
70	130.00	55.58	70.07	70.07
71	70.00	21.55	43.37	41.99
72	21.00	32.79	63.89	65.09
73	160.00	30.46	60.77	60.77
74	60.00	33.60	58.83	61.25
75	70.00	29.04	56.07	58.08
76	40.00	37.81	46.46	46.46
77	325.00	42.48	84.74	84.47
78	955.59	65.90	131.64	137.76
79	70.00	66.14	86.11	86.11
80	80.00	36.37	40.19	33.35
81	70.00	66.14	86.11	86.11
82	80.00	47.43	54.42	50.79
83	60.00	68.53	136.59	137.00
84	45.00	44.01	62.93	68.49
85	320.00	43.25	88.50	88.50
86	60.00	5.01	10.83	9.38
87	930.00	76.09	150.58	151.97
88	160.00	19.45	39.36	39.36
89	50.00	16.85	31.55	32.09
90	50.00	13.64	28.74	29.15
91	50.00	13.64	28.74	29.15
92	50.00	13.64	28.74	29.15
93	50.00	13.64	28.74	29.15
94	80.00	37.60	68.05	70.19
95	160.00	43.25	88.50	88.50
96	40.00	31.11	49.11	52.88
97	785.00	103.41	195.18	198.93
98	305.00	66.65	130.67	131.58
99	45.00	60.51	74.97	80.75
100	188.40	50.45	116.12	116.69
101	387.58	40.26	80.02	80.18
102	222.00	39.26	77.11	77.01
103	188.95	58.67	112.07	113.78
104	75.80	58.40	84.31	100.89
105	59.87	30.20	103.48	119.85
106	206.40	63.01	120.57	122.29
107	258.62	60.87	118.51	119.27
108	71.28	57.99	73.85	78.17
109	40.00	121.93	84.43	109.55
110	470.00	50.64	100.58	130.30
111	45.00	43.98	62.24	69.72
112	530.00	32.38	64.62	144.67
113	300.00	45.55	92.30	97.28
114	180.00	60.31	114.38	119.35
115	230.29	10.87	141.53	144.85
116	60.00	317.16	177.91	319.83
117	70.00	109.87	208.42	206.24
118	44.00	36.37	40.19	33.35
119	80.00	36.84	50.32	53.50
120	50.00	17.28	23.88	24.11
121	40.00	54.31	71.67	81.46
122	480.00	70.81	139.61	144.06
123	480.00	11.42	22.81	21.82
124	480.00	66.70	134.42	139.51
125	480.00	66.70	134.42	139.51
126	480.00	66.70	134.42	139.51
127	480.00	66.70	134.42	139.51
128	480.00	66.70	134.42	139.51
129	480.00	66.70	134.42	139.51
130	480.00	66.70	134.42	139.51
131	480.00	66.70	134.42	139.51
132	480.00	66.70	134.42	139.51
133	480.00	66.70	134.42	139.51
134	480.00	66.70	134.42	139.51
135	480.00	66.70	134.42	139.51
136	480.00	66.70	134.42	139.51
137	480.00	66.70	134.42	139.51
138	480.00	66.70	134.42	139.51
139	480.00	66.70	134.42	139.51
140	480.00	66.70	134.42	139.51
141	480.00	66.70	134.42	139.51
142	480.00	66.70	134.42	139.51
143	480.00	66.70	134.42	139.51
144	480.00	66.70	134.42	139.51
145	480.00	66.70	134.42	139.51
146	480.00	66.70	134.42	139.51
147	480.00	66.70	134.42	139.51
148	480.00	66.70	134.42	139.51
149	480.00	66.70	134.42	139.51
150	480.00	66.70	134.42	139.51

NOT PLATTED

NOT PLATTED



SEE SHEET 2

SEE SHEET NO. 4

0234-304 14/43/42

30

FLORIDA SURVEYING & MAPPING, INC. REGISTERED LAND SURVEYORS WEST PALM BEACH, FLORIDA 33401			
Scale 1" = 60'	Revisions	By	Date
Date 9-23-78			
Dr'n Ckd J.P.			
CYPRESS LAKES PLAT NO. 2		Sheet 3 of 4 Sheets	
No 177-91		37/150	

CYPRESS LAKES PLAT 2